

How UofGH is Preparing for Your Safe Return

SEPT. 16
2021

The University of Guelph-Humber is treating the fall semester as a transitional one, with a higher percentage of our instructors, staff and students returning to campus. All in-person courses will be delivered with a focus on safety and according to public health and government requirements. Visit our Return to Campus webpage to get the most up to date information at: guelphhumber.ca/campus-return

VACCINATION POLICY

Return to Campus – To ensure that we can maintain a healthy and safe environment on campus at UofGH with our partner Humber College, we have instituted a Vaccination Policy in alignment with directives from the Government of Ontario.

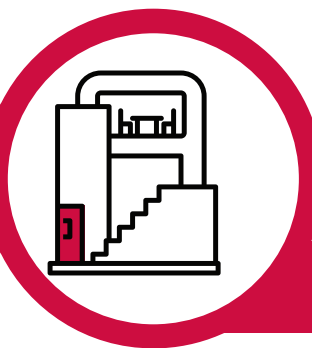
This fall UofGH will require staff, instructors, students and visitors to provide proof that they are fully vaccinated, or that they have received an exemption from the University. Those with an approved exemption will be required to get a negative COVID-19 test up to 72 hours before coming to campus. Learn more at: guelphhumber.ca/return-campus-faqs



Ventilation and air filtration – The building filtration system consists of two air handlers with a Merv-10 pre filter and a Merv-13 filter (the standard recommended by Health Canada and used in healthcare facilities). Ventilation rates will automatically speed up when there are more people in a space. Much of the return air for the building is sucked through the atrium biowall which removes pollutants and CO2.

Physical distancing – As per the Ministry of Colleges and Universities guidelines for the Fall 2021 semester, requirements for masking when indoors and physical distancing outside of the classroom will remain in place.

Enhanced cleaning – High-touch surfaces in high-traffic areas are cleaned frequently. Hand sanitizer stations and wipes are available across campus.



SAFE SPACES

STUDENT SERVICES

Ongoing Support – All of our student services are still being offered, and we expect to continue to provide high-quality student support through a mix of face-to-face and remote options this fall. We encourage you to reach out to your academic advisor should you have any questions or concerns. Co-curricular activities across campus will be available with modifications as required. For information on how to stay involved, visit guelphhumber.ca/life/get-involved

Financial Support – We understand that the COVID-19 pandemic has increased financial stress for many students. We encourage students who might be experiencing financial difficulty to visit our Student Financial Services page at guelphhumber.ca/sfs

Managing Stress – We recognize the stress that this unusual time can place on you, and encourage you to refer to our health and wellness website at guelphhumber.ca/life/health for resources to help you cope.

Course Scheduling – We have worked to create a more inclusive schedule, including a substantial amount of face-to-face courses, hyflex courses (offered in-person and streamed online), and online learning options.

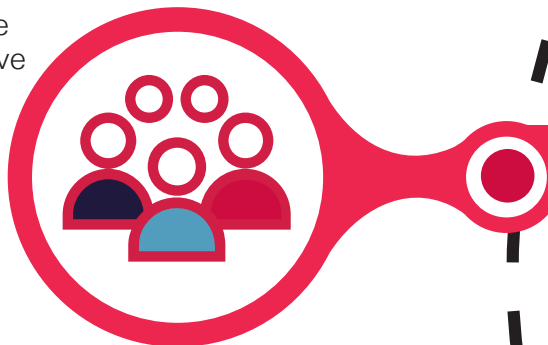


PERSONAL SAFETY

Humber Guardian – Students, instructors and staff must use the Humber Guardian app to self-screen and show proof of vaccination or an approved exemption and a recent negative COVID-19 test (taken within 72 hours before coming to campus) every time they come to campus.

Masks and PPE – Masks are required on campus. Some specific exceptions apply, such as when eating or drinking, or when outdoors and able to stay two metres apart. We will continue to adhere to the mask requirements in the fall.

Updated COVID-19 Awareness Training – All staff and instructors are required to complete the updated COVID-19 Awareness Training. More training information can be found in the staff area on the Return to Campus webpage.



OUR COMMITMENT TO YOU

We continue to be committed to your health and safety, providing rich, career-focused education that prepares graduates for future success and to being transparent and accountable to you. We know that you and your fellow students continue to live, work and study in difficult times, and we are here for you. We are focused on your success as students and as individuals. While many things are different, what hasn't changed are the values that shape how we teach and learn together.